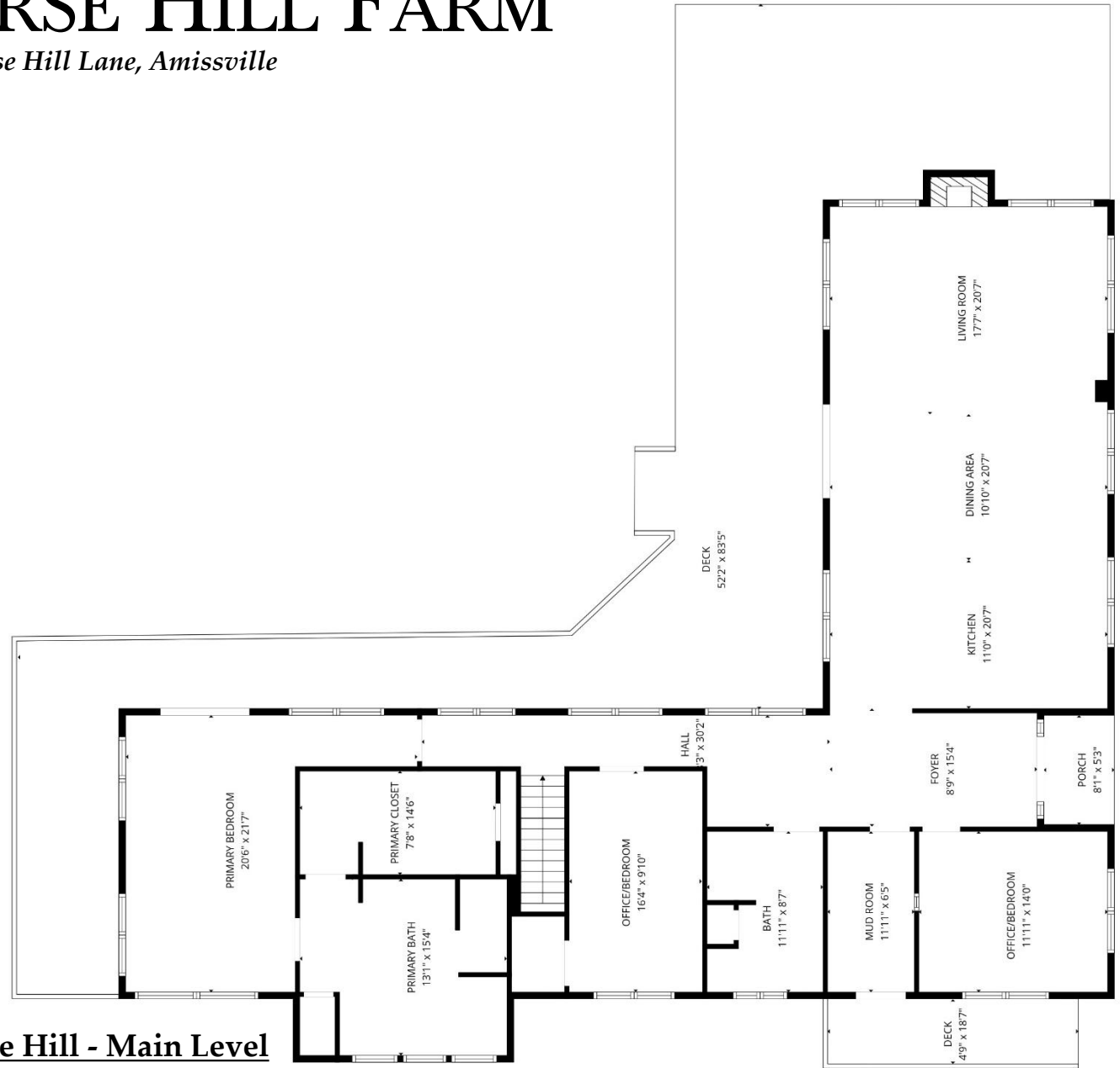


# WHITE HORSE HILL FARM

19/23 White Horse Hill Lane, Amissville



**23 White Horse Hill - Main Level**



CHERIWOODARDREALTY

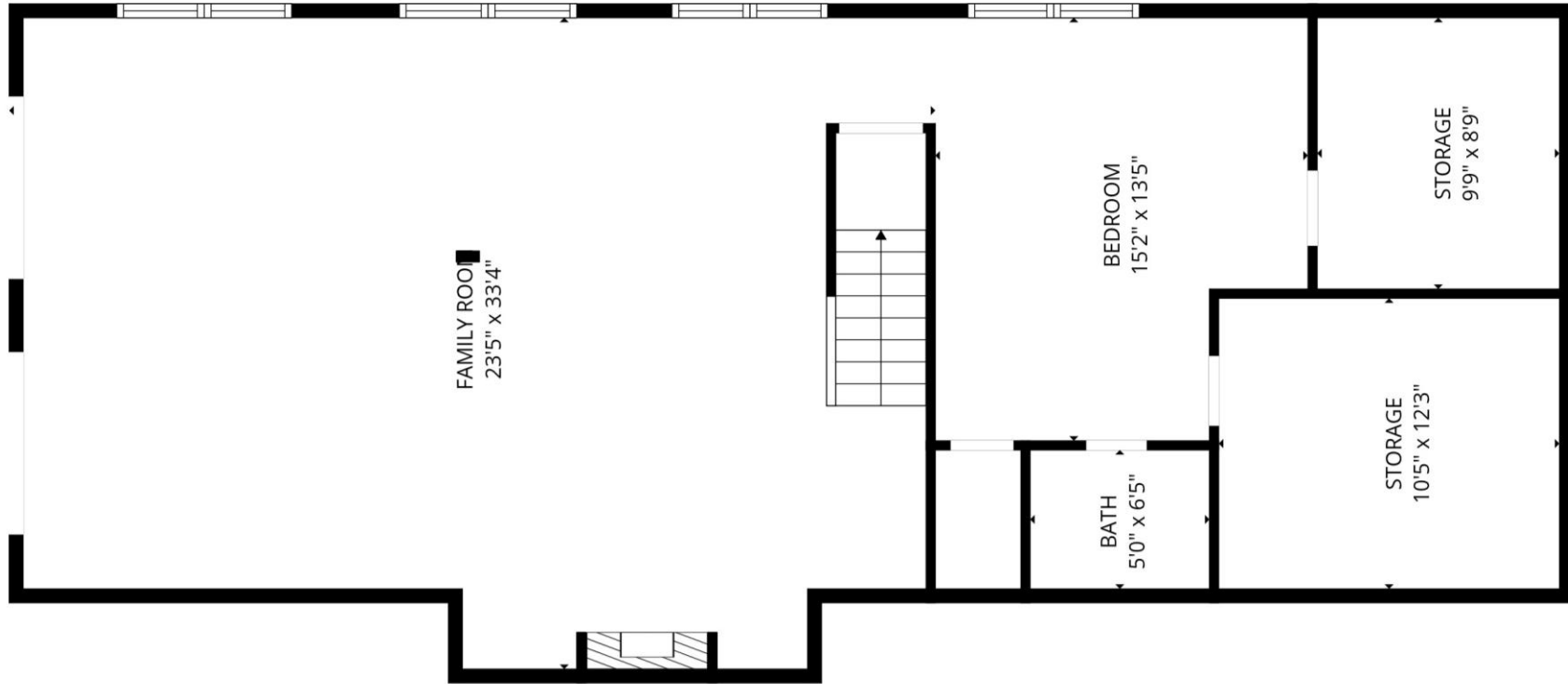
37C Main Street • Sperryville, VA 22740

540.987.8500 • [www.cheriwoodard.com](http://www.cheriwoodard.com)

Measurements deemed reliable but not guaranteed. For reference purposes only.

# WHITE HORSE HILL FARM

19/23 White Horse Hill Lane, Amissville



## 23 White Horse Hill - Lower Level



CHERIWOODARDREALTY

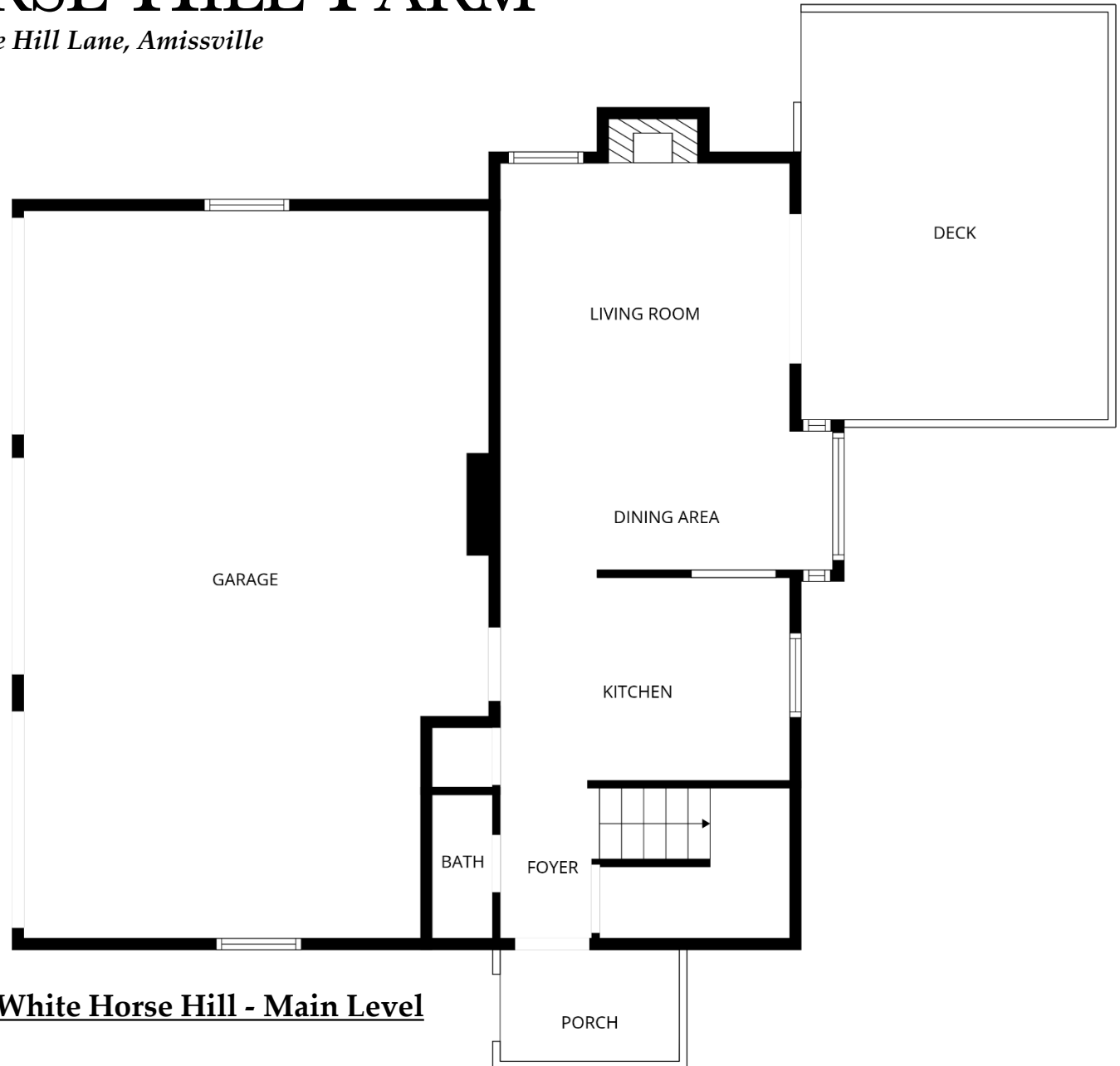
37C Main Street • Sperryville, VA 22740

540.987.8500 • [www.cheriwoodard.com](http://www.cheriwoodard.com)

Measurements deemed reliable but not guaranteed. For reference purposes only.

# WHITE HORSE HILL FARM

19/23 White Horse Hill Lane, Amisville



**19 White Horse Hill - Main Level**



CHERIWOODARDREALTY

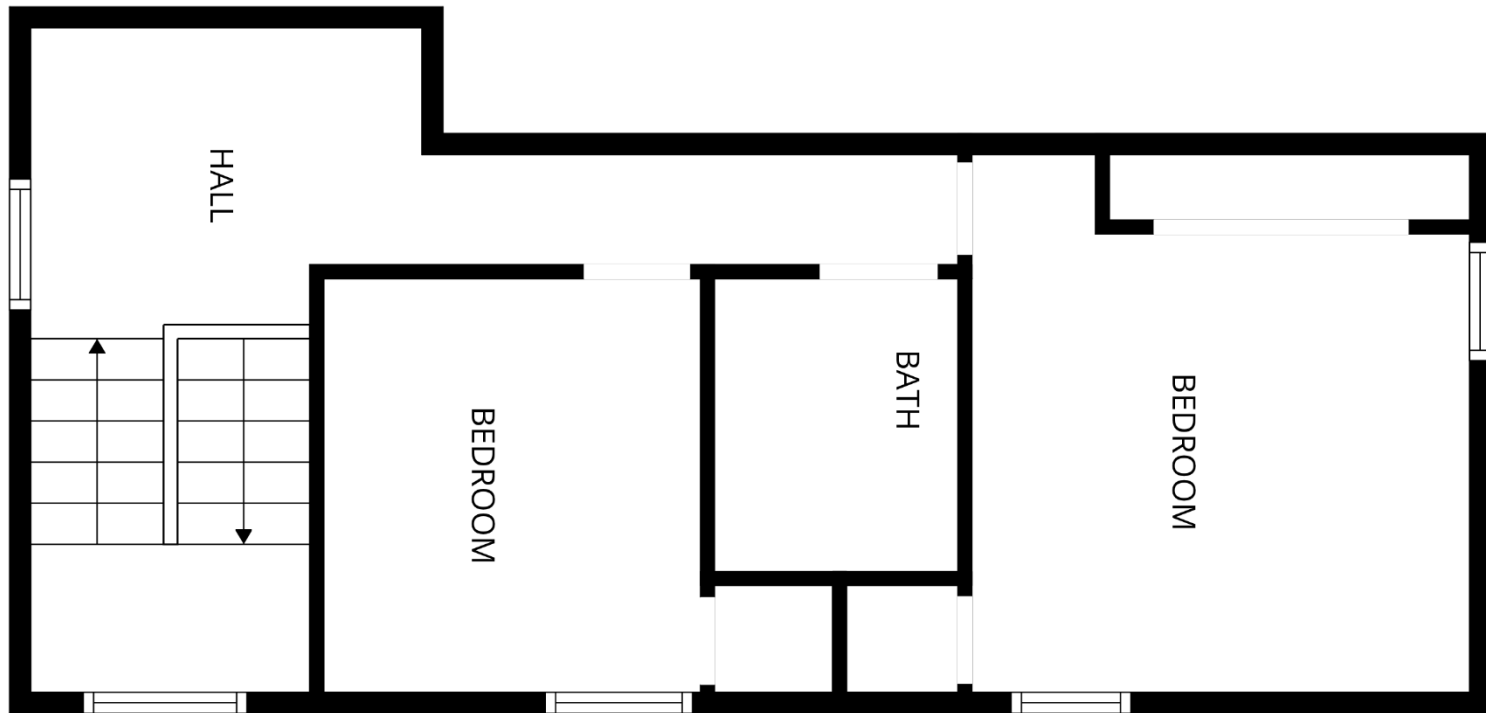
37C Main Street • Sperryville, VA 22740

540.987.8500 • [www.cheriwoodard.com](http://www.cheriwoodard.com)

Measurements deemed reliable but not guaranteed. For reference purposes only.

# WHITE HORSE HILL FARM

19/23 White Horse Hill Lane, Amissville



## 19 White Horse Hill – Upper Level



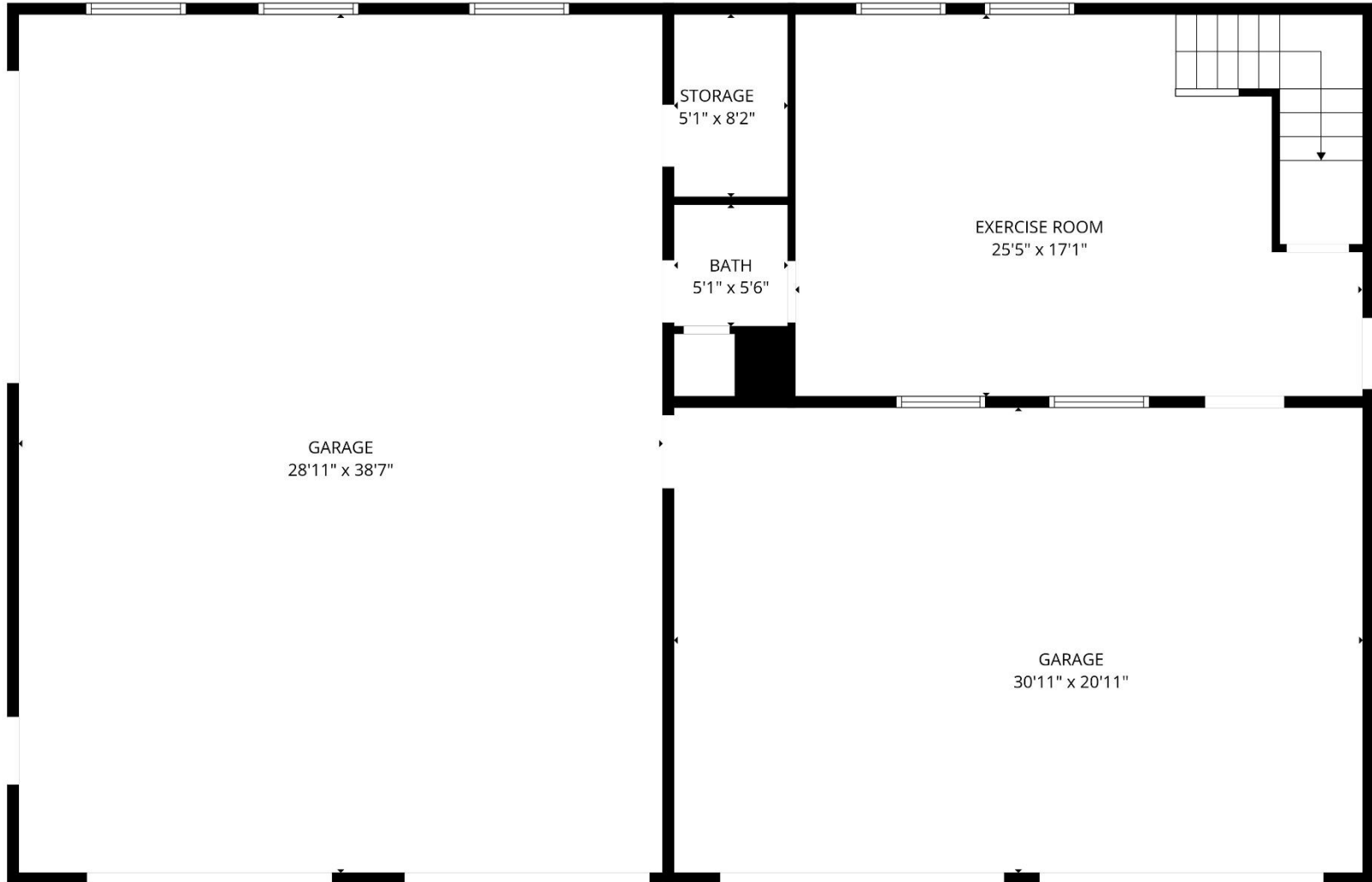
CHERIWOODARDREALTY

37C Main Street • Sperryville, VA 22740  
540.987.8500 • [www.cheriwoodard.com](http://www.cheriwoodard.com)

Measurements deemed reliable but not guaranteed. For reference purposes only.

# WHITE HORSE HILL FARM

19/23 White Horse Hill Lane, Amissville



## Car Barn - Main Level



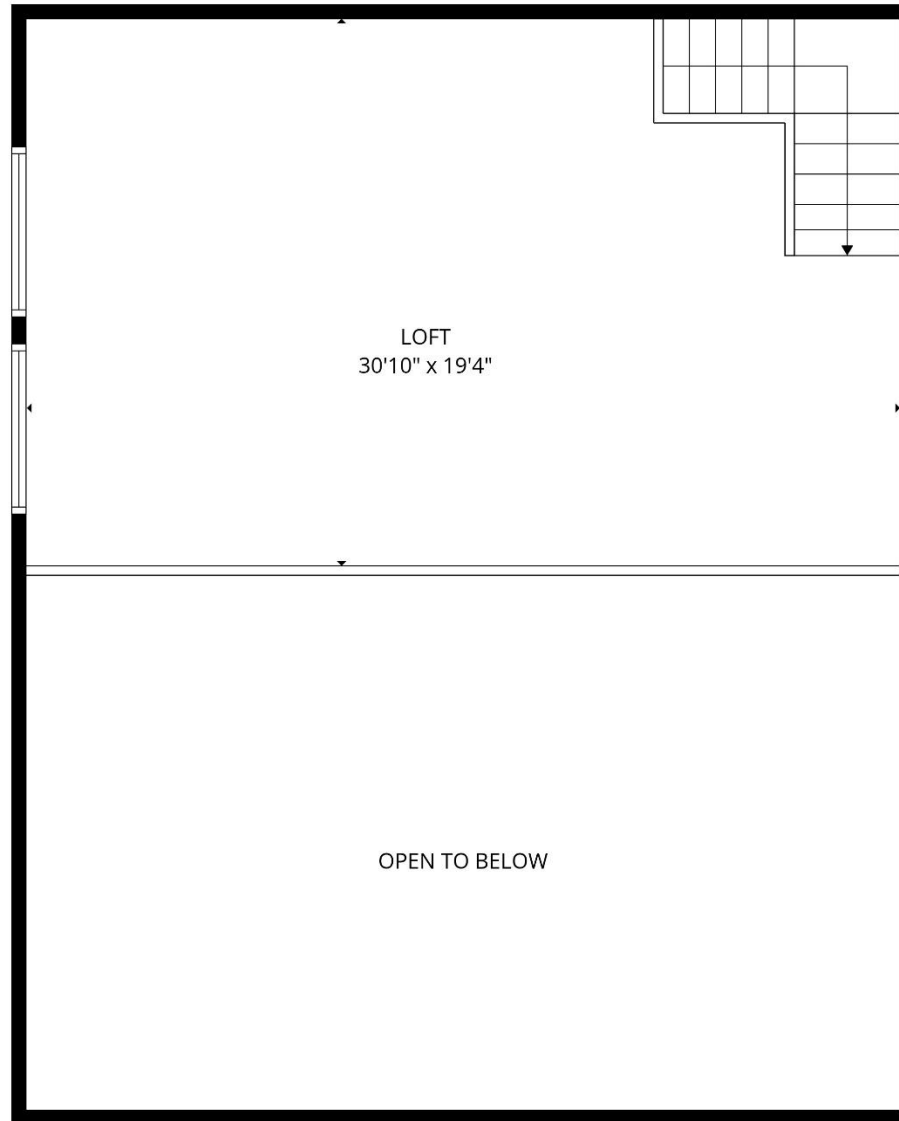
CHERIWOODARDREALTY

37C Main Street • Sperryville, VA 22740  
540.987.8500 • [www.cheriwoodard.com](http://www.cheriwoodard.com)

Measurements deemed reliable but not guaranteed. For reference purposes only.

# WHITE HORSE HILL FARM

*19/23 White Horse Hill Lane, Amissville*



**Car Barn - Upper Level**



CHERIWOODARDREALTY

37C Main Street • Sperryville, VA 22740

540.987.8500 • [www.cheriwoodard.com](http://www.cheriwoodard.com)

Measurements deemed reliable but not guaranteed. For reference purposes only.