

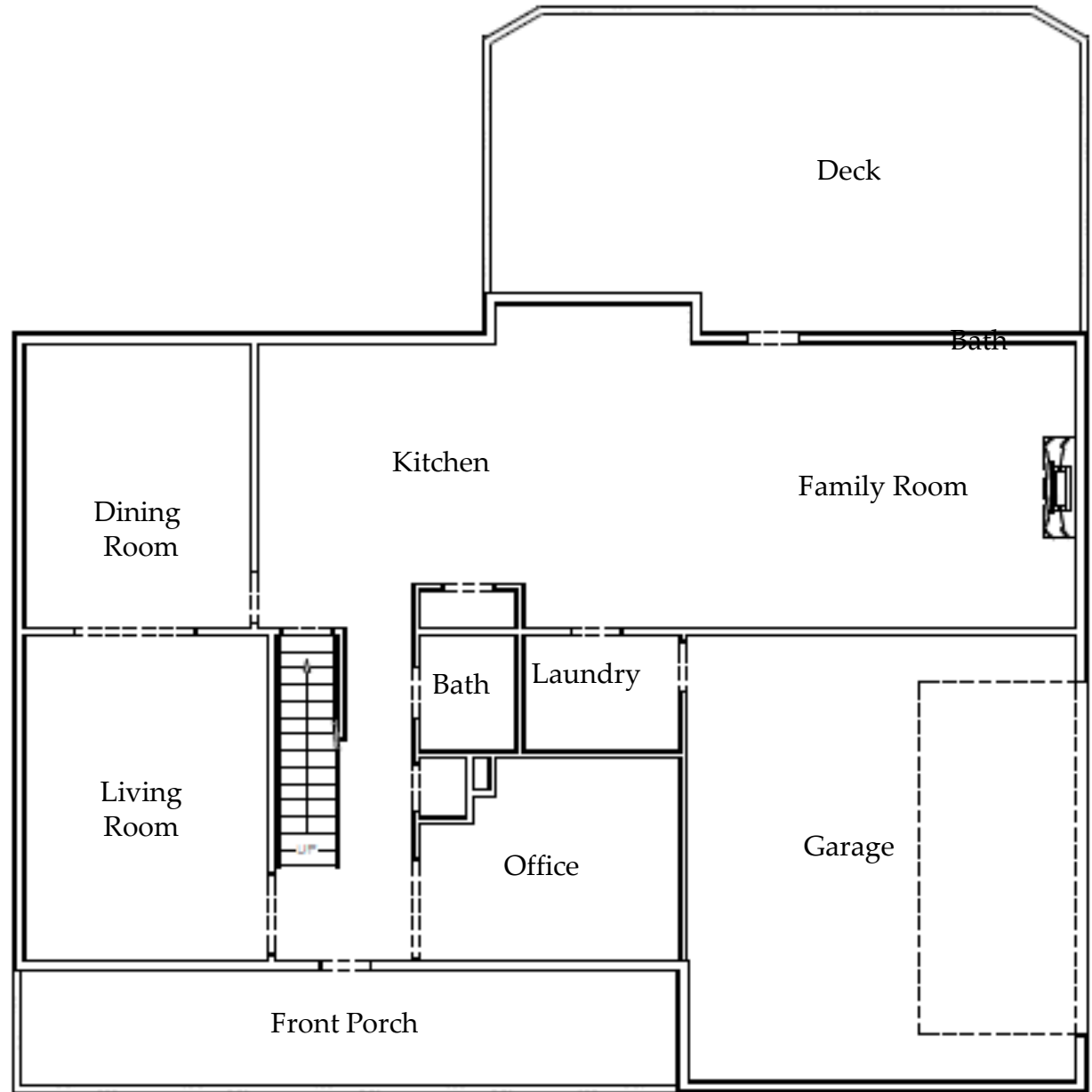
RICHMOND ROAD

23 Richmond Road, Castleton

Room Dimensions

Dining Room	12	X	14
Kitchen / Family Room	41	X	14
Living Room	12	X	17
Office	13	X	10
Garage	20	X	23

Floor plans are for reference purposes only



Main Level



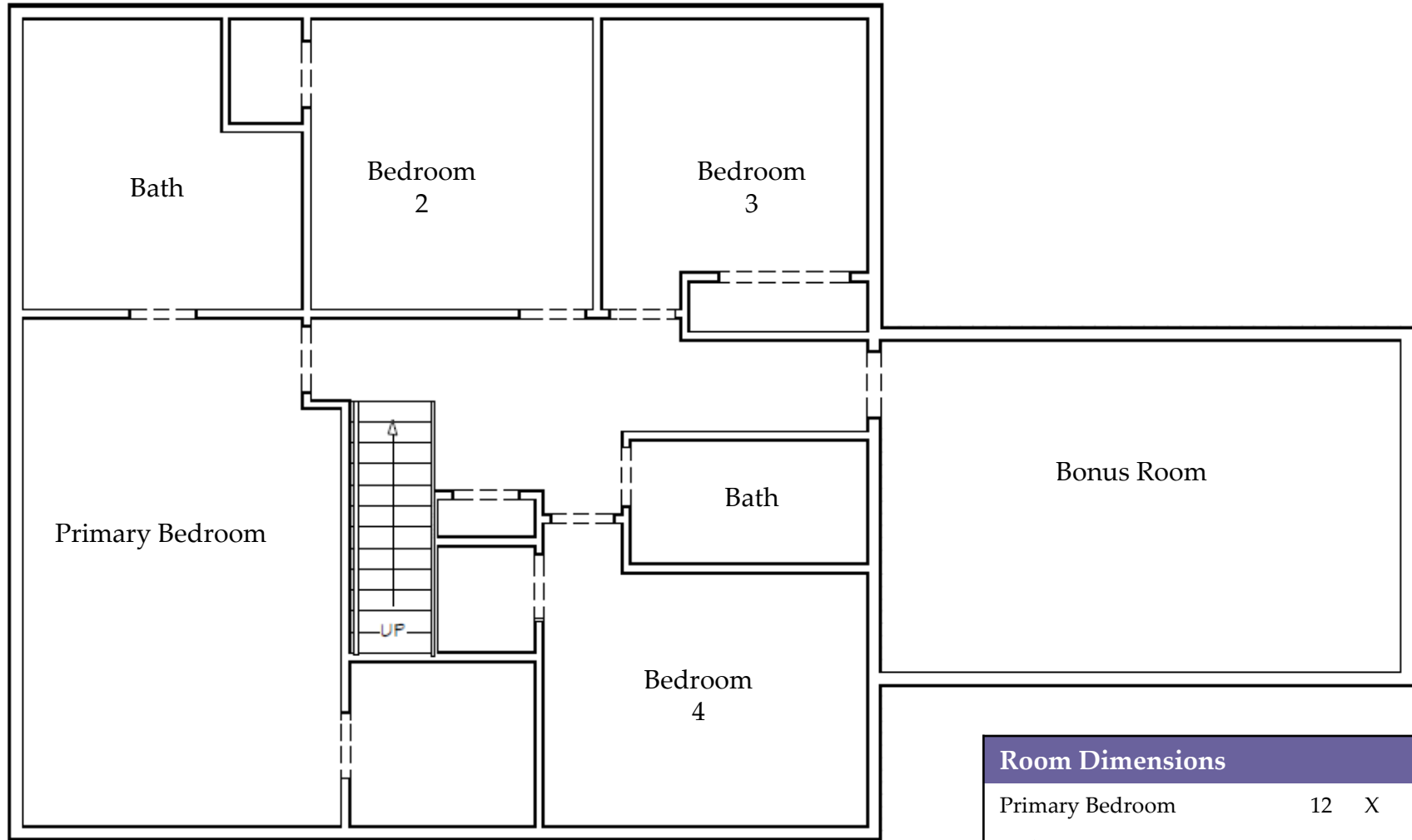
CHERIWOODARDREALTY

37C Main Street • Sperryville, VA 22740

540.987.8500 • www.cheriwoodard.com

RICHMOND ROAD

23 Richmond Road, Castleton



Upper Level

Room Dimensions

Primary Bedroom	12	X	20
Bedroom 2	11	X	11
Bedroom 3	10	X	11
Bedroom 4	13	X	10
Bonus	20	X	13

Floor plans are for reference purposes only



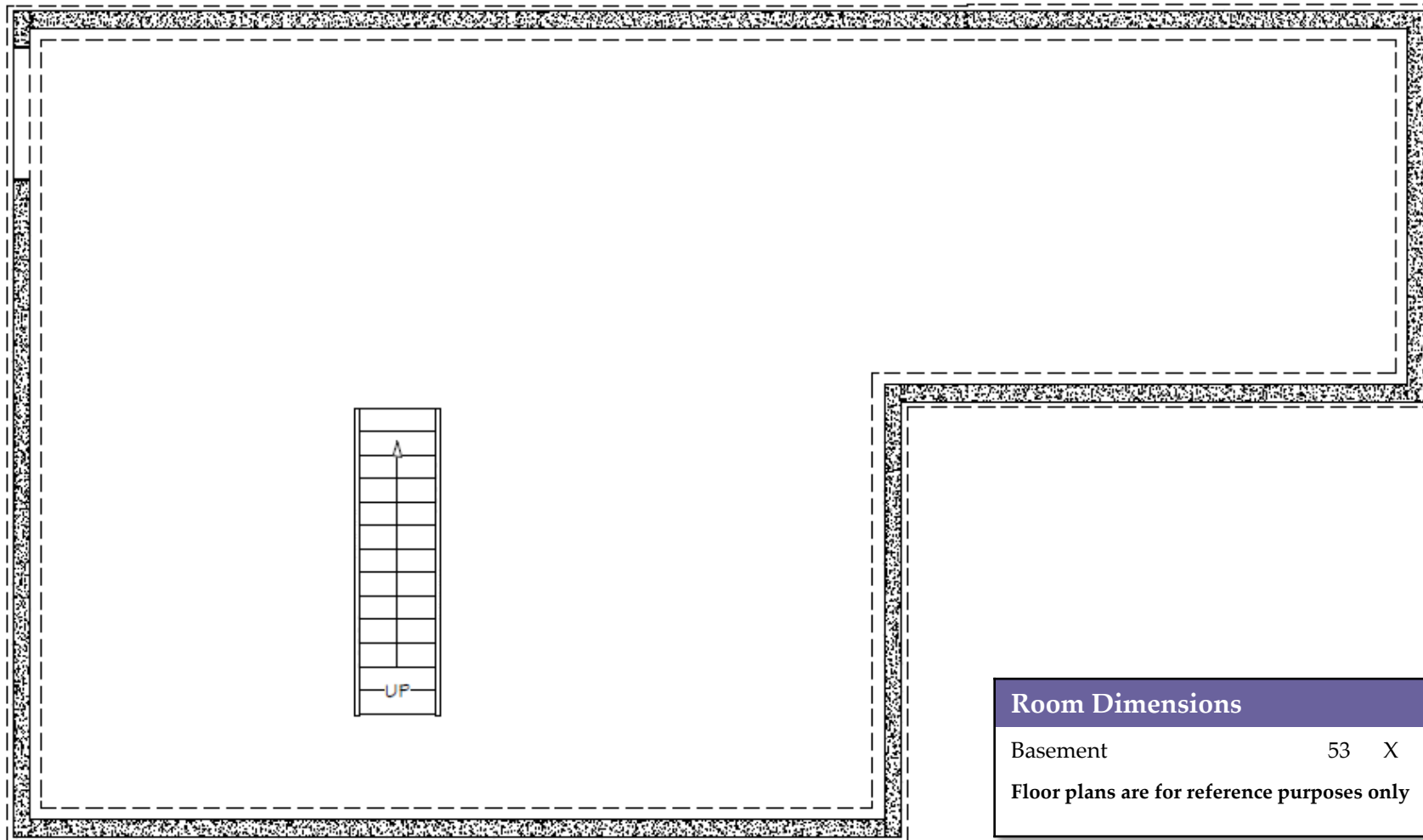
CHERIWOODARDREALTY

37C Main Street • Sperryville, VA 22740

540.987.8500 • www.cheriwoodard.com

RICHMOND ROAD

23 Richmond Road, Castleton



Lower Level



CHERIWOODARDREALTY

37C Main Street • Sperryville, VA 22740

540.987.8500 • www.cheriwoodard.com