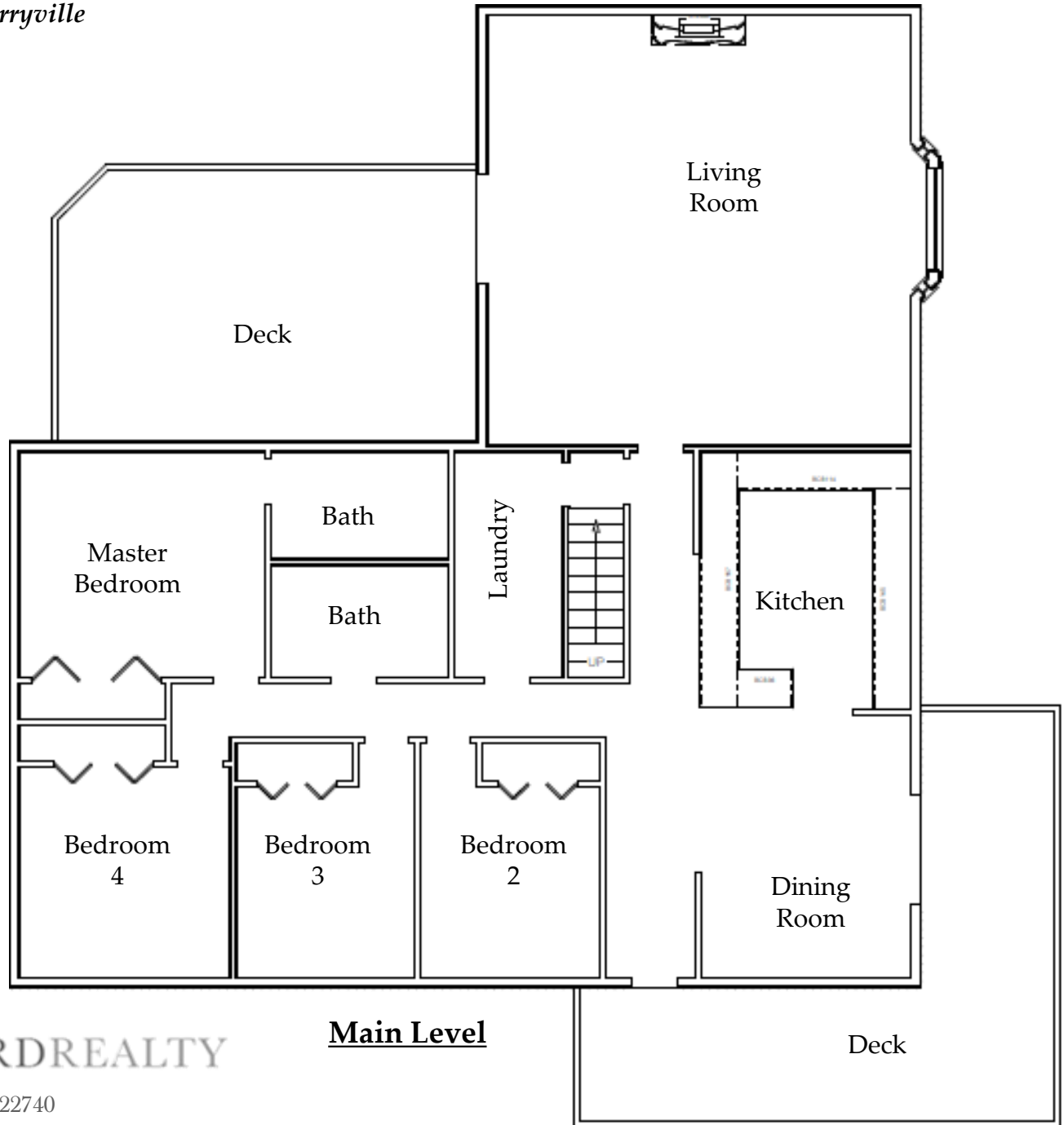


HUGHES RIVER HOUSE

3288 Slate Mills Road, Sperryville

Room Dimensions		
Living Room	22	X 24
Kitchen	12	X 14
Dining Room	12	X 14
Master Bedroom	14	X 12
Bedroom 4	12	X 12
Bedroom 3	10	X 11
Bedroom 2	10	X 11

Floor plans are for reference purposes only



Main Level



CHERIWOODARDREALTY

37C Main Street • Sperryville, VA 22740

540.987.8500 • www.cheriwoodard.com

HUGHES RIVER HOUSE

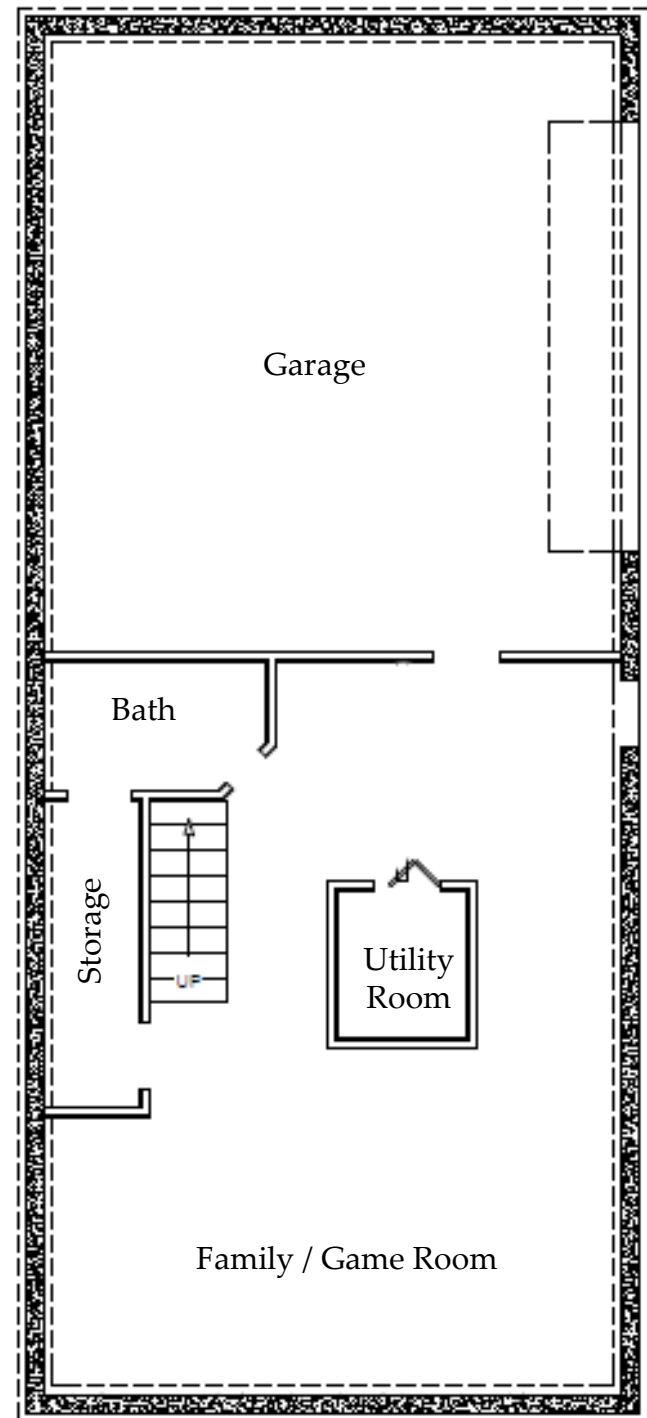
3288 Slate Mills Road, Sperryville

Room Dimensions

Garage 22 X 13

Dining Room 22 X 13

Floor plans are for reference purposes only



Lower Level



CHERIWOODARDREALTY

37C Main Street • Sperryville, VA 22740

540.987.8500 • www.cheriwoodard.com