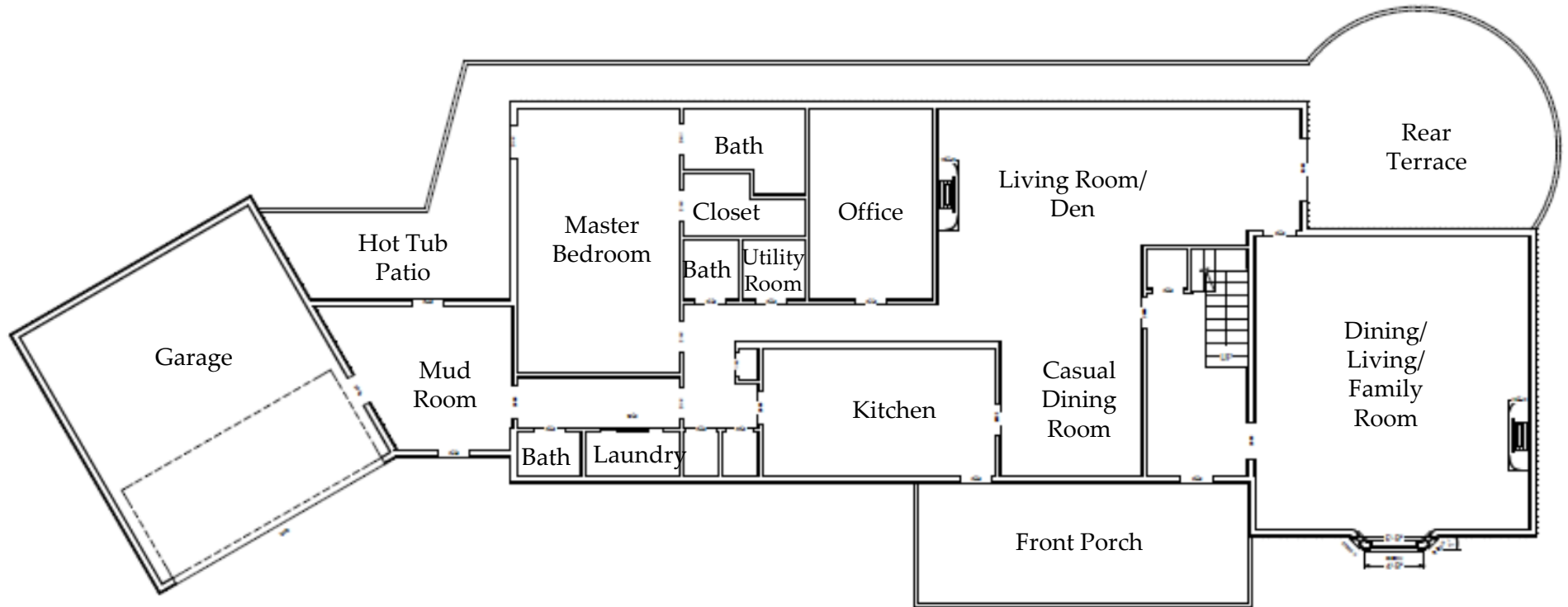


ELDON VIEW

4802 Sperryville Pike, Woodville



Main Level

Room Dimensions			
Garage	21	X	23
Master Bedroom	13	X	21
Office	10	X	16
Kitchen	18	X	10
Living Room / Den	29	X	15
Casual Dining Room	12	X	14
Dining /Living/Family Room	23	X	23

Floor plans are for reference purposes only



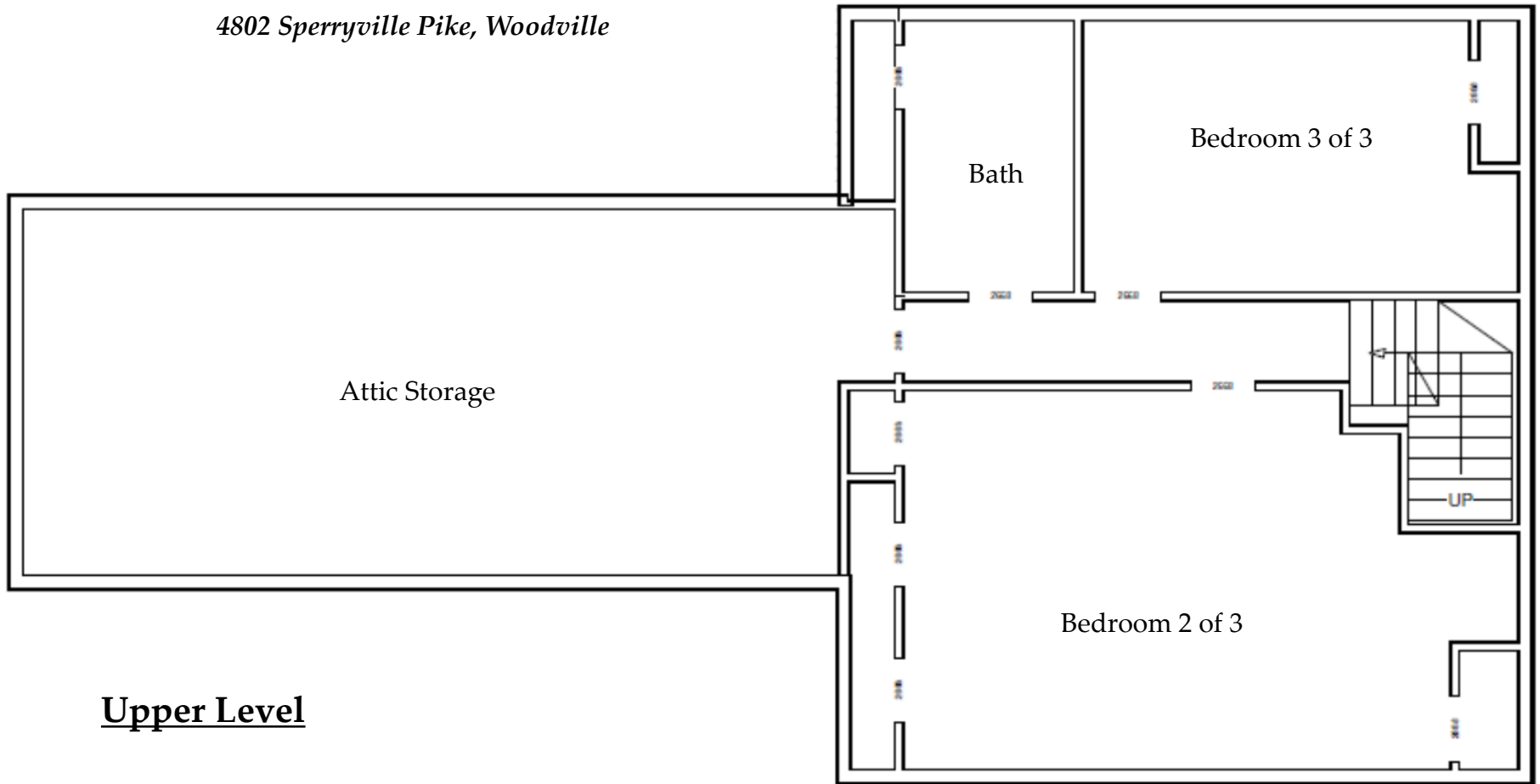
CHERIWOODARDREALTY

37C Main Street • Sperryville, VA 22740

540.987.8500 • www.cheriwoodard.com

ELDON VIEW

4802 Sperryville Pike, Woodville



Upper Level

Room Dimensions

Bedroom 2	24	X	15
Bedroom 3	17	X	11
Attic Storage	32	X	14

Floor plans are for reference purposes only



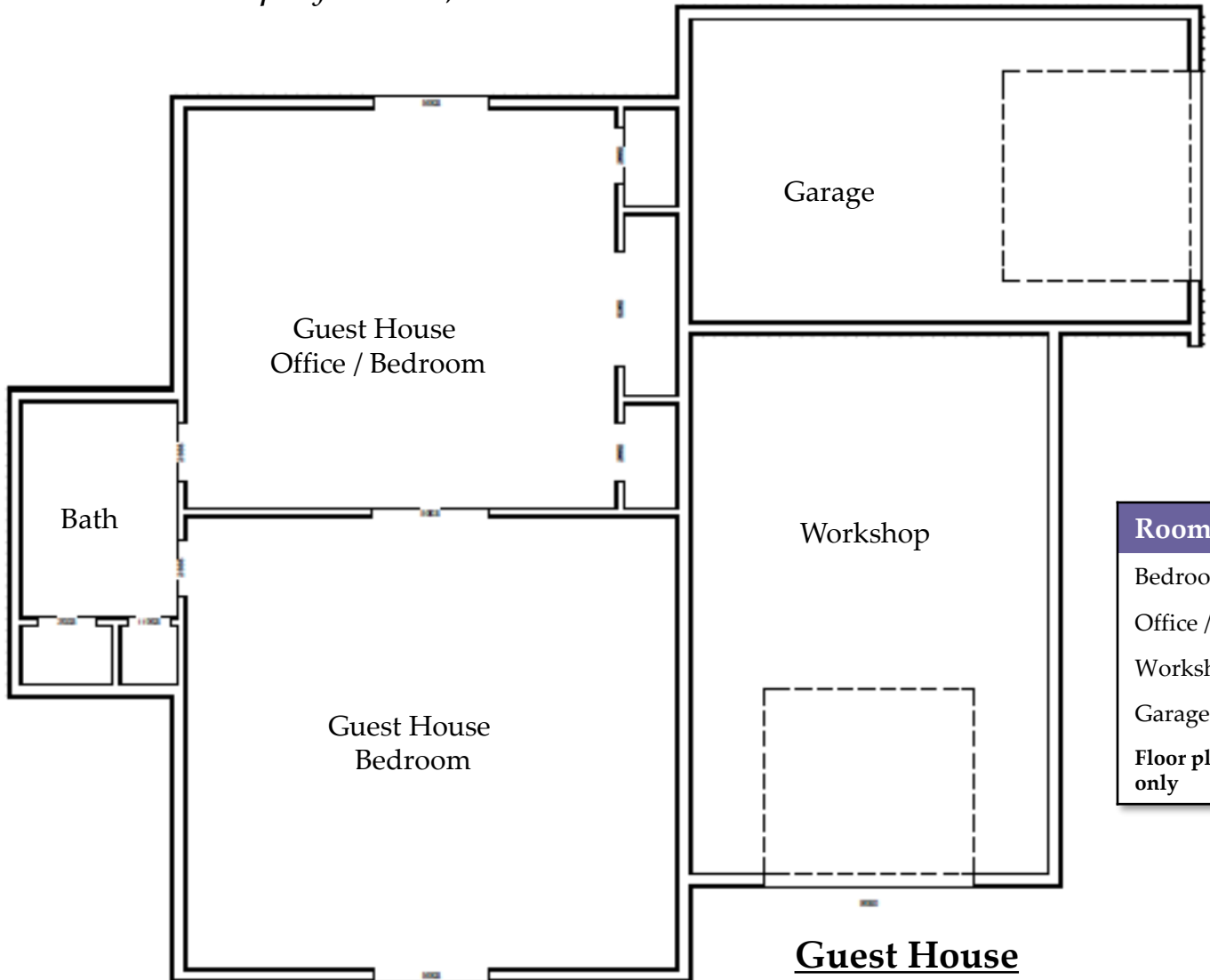
CHERIWOODARDREALTY

37C Main Street • Sperryville, VA 22740

540.987.8500 • www.cheriwoodard.com

ELDON VIEW

4802 Sperryville Pike, Woodville



Room Dimensions		
Bedroom	21	X 20
Office / Bedroom	19	X 17
Workshop	16	X 23
Garage	22	X 13

Floor plans are for reference purposes only



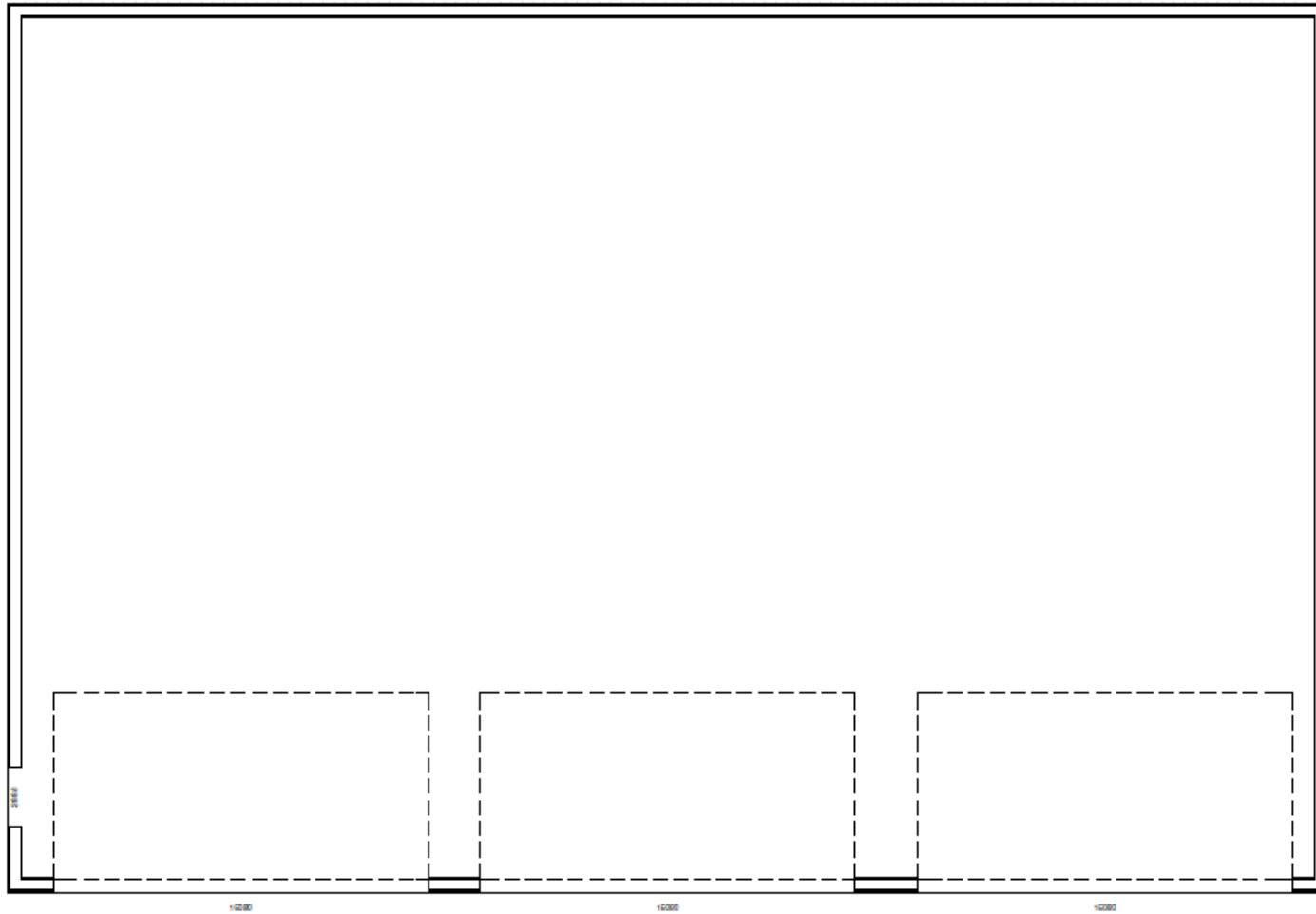
CHERIWOODARDREALTY

37C Main Street • Sperryville, VA 22740

540.987.8500 • www.cheriwoodard.com

ELDON VIEW

4802 Sperryville Pike, Woodville



6 Bay Garage



CHERIWOODARDREALTY

37C Main Street • Sperryville, VA 22740
540.987.8500 • www.cheriwoodard.com

Room Dimensions

Garage 55 X 37

Floor plans are for reference purposes only